

# OFFICE OF DATA & ANALYTICS

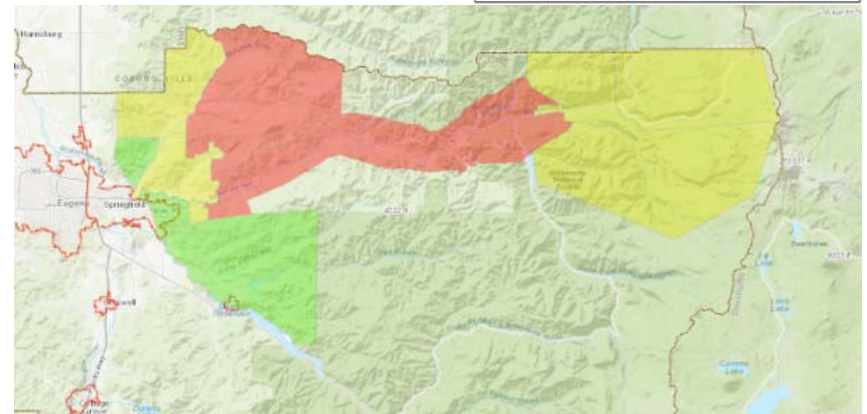
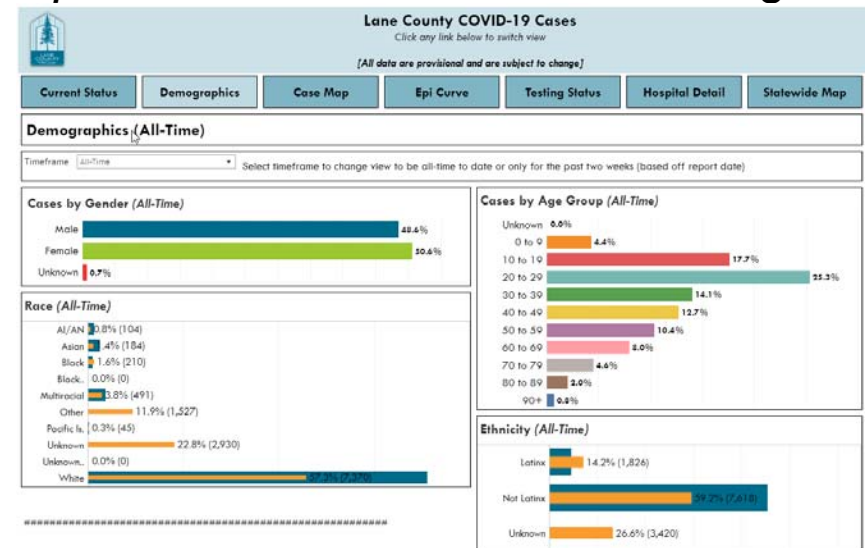


Presenter(s):  
Michael Finch – Chief  
Information Officer

# Data & Analytics

*Mission: To ensure the County is providing easy access to relevant data & information in the best possible ways to help make decisions & solve challenges*

- 2 FTE
  - ▣ Manager
  - ▣ Sr. Management Analyst



FY 21-22 Proposed Budget Presentation

# COVID Impact Analytics

## Lane County COVID-19 Cases: Report Table of Contents

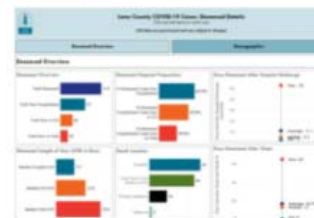
### Table of Contents

#### Table of Contents

##### Daily Report



##### Deceased Details



##### Weekly Overall



##### Disease Severity Detail



##### Risk Factors, Signs, & Symptoms



##### Outbreaks



##### Epi Links



##### School Metrics



##### Targeted Testing

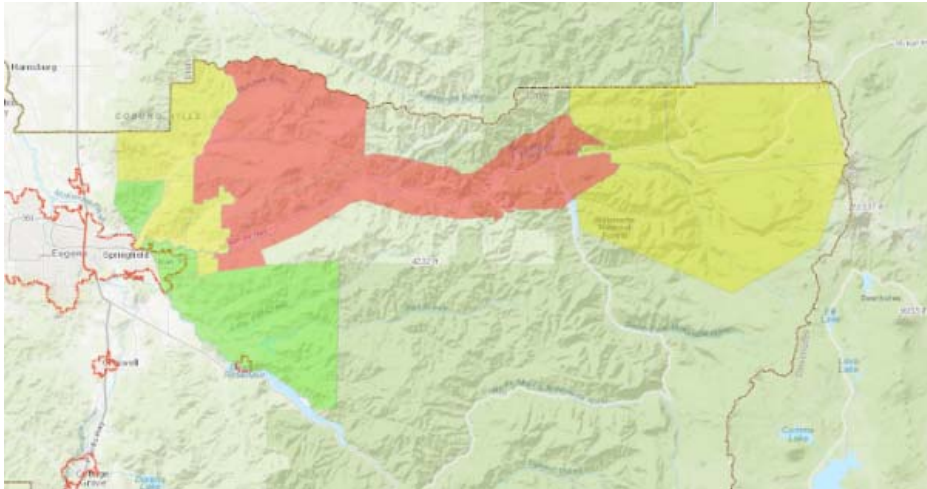


##### Contact Tracing

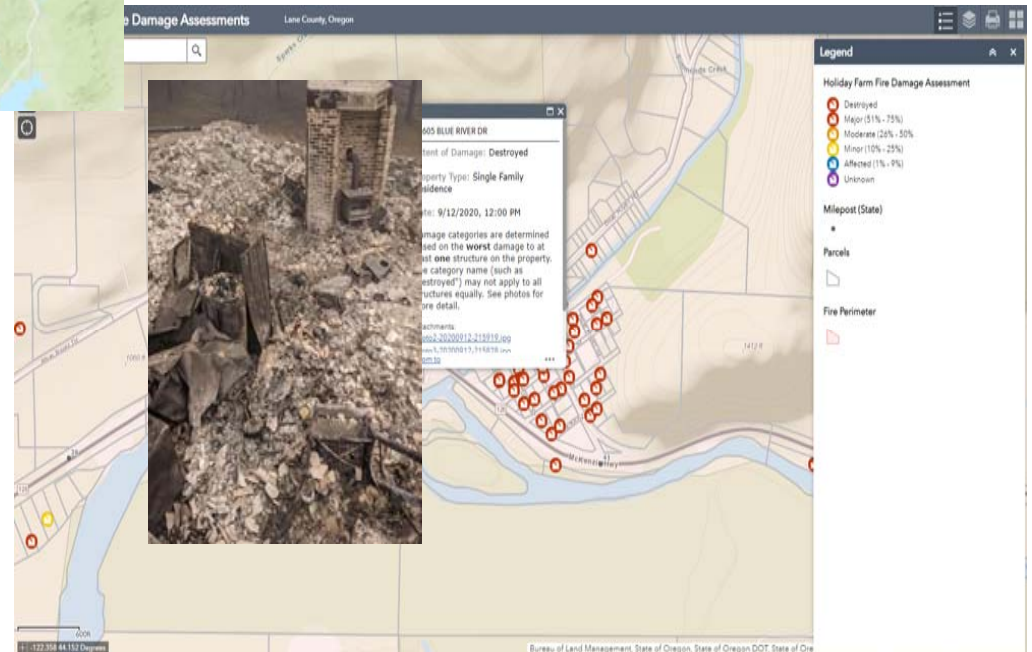


# Holiday Farm Fire

## Evacuation Areas



## Damage Assessments

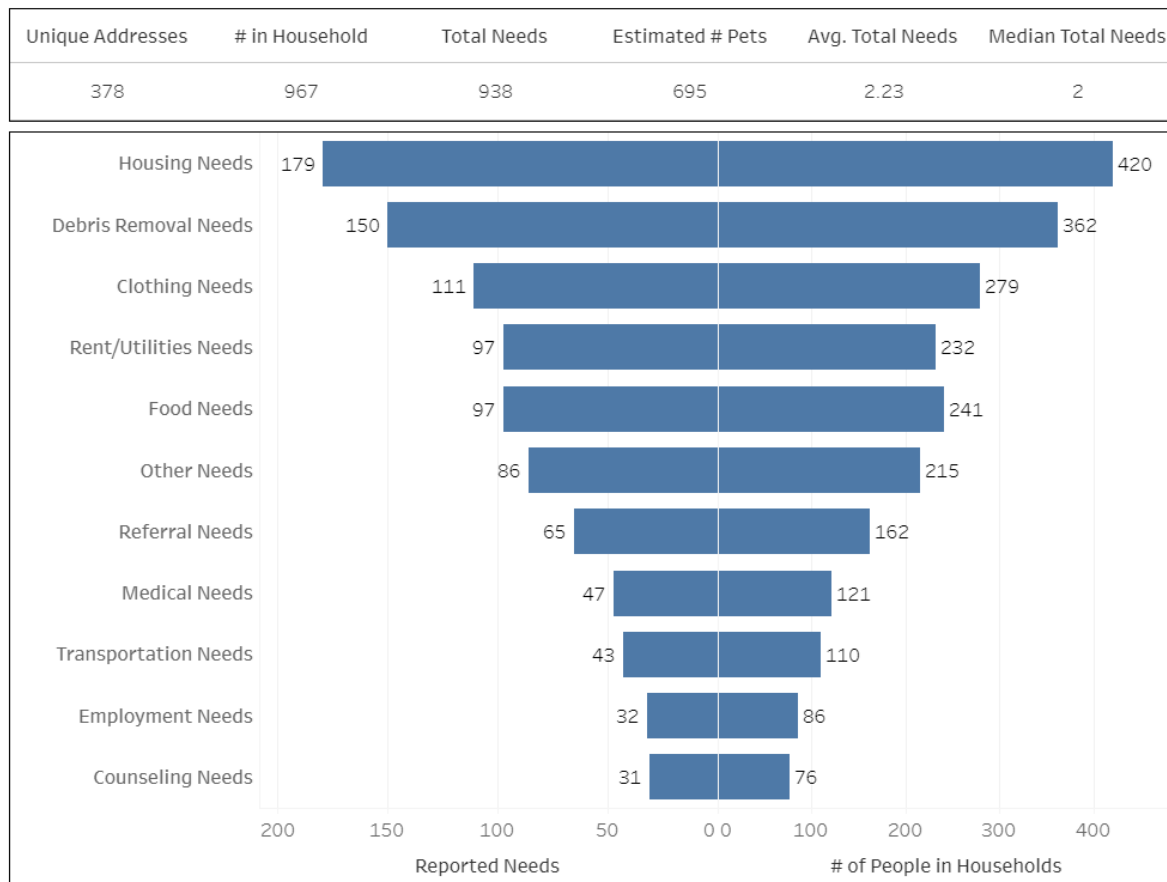


FY 21-22 Proposed Budget Presentation

# Holiday Farm Fire

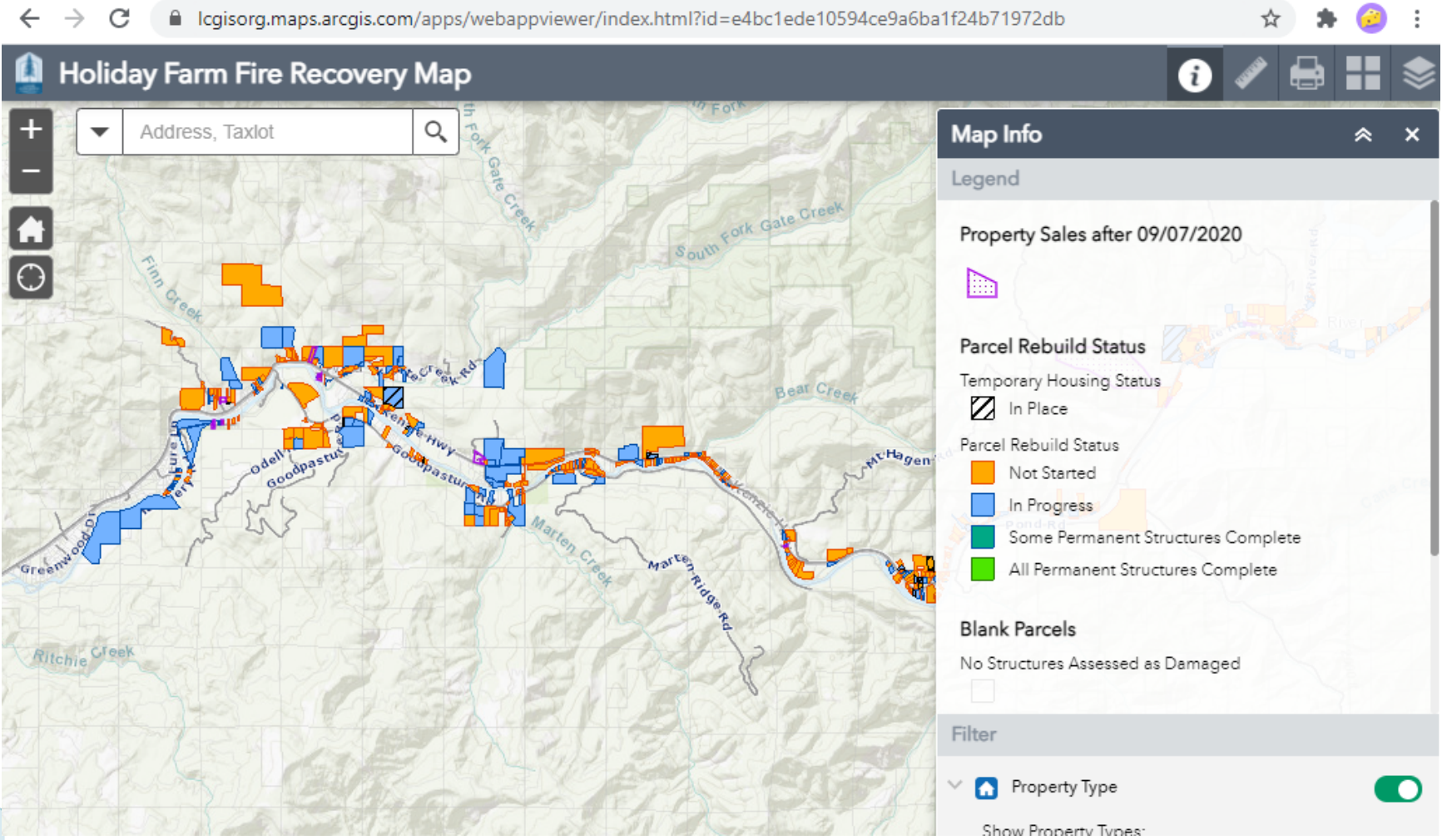
## MARC Needs assessment

### Overall Needs



FY 21-22 Proposed Budget Presentation

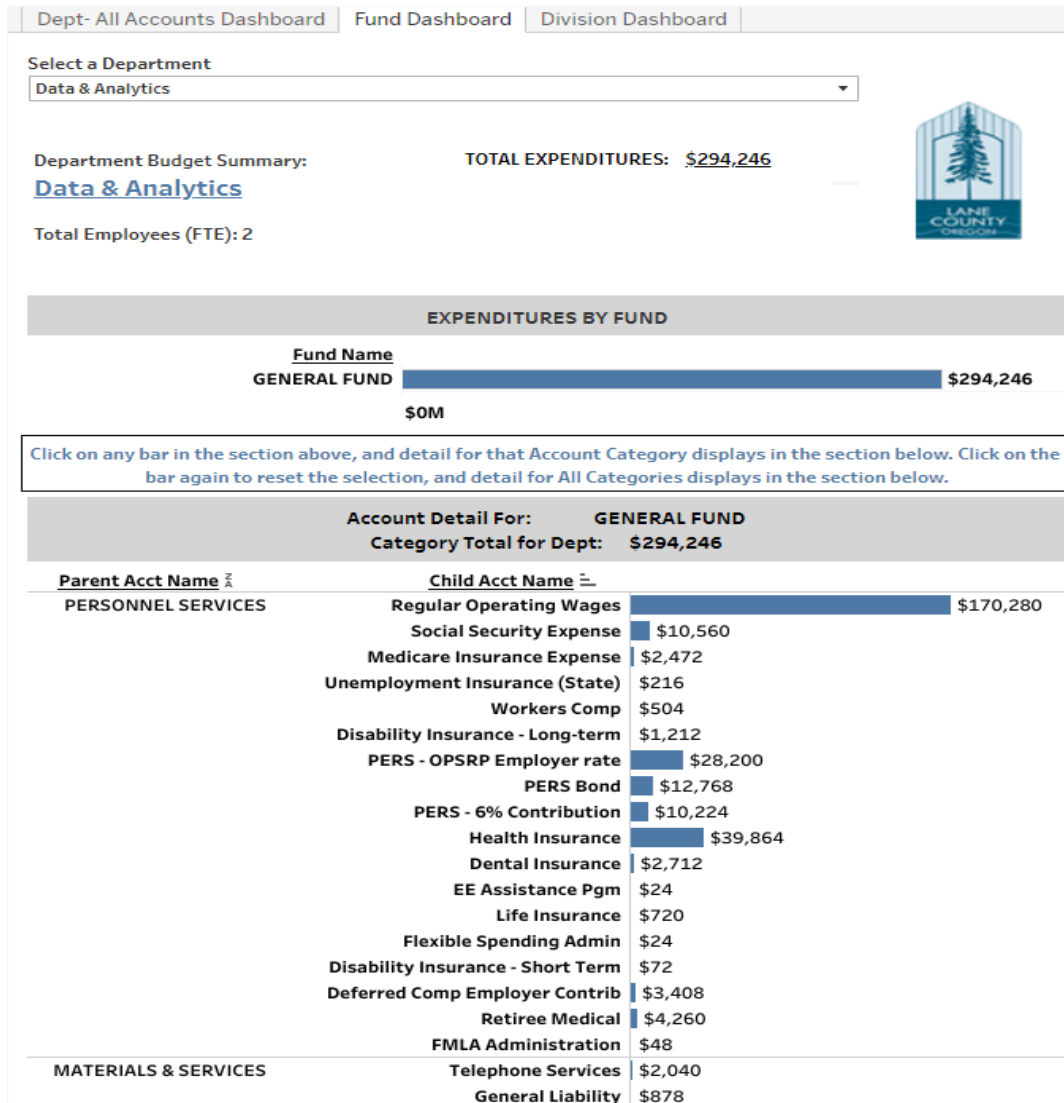
# Holiday Farm Fire



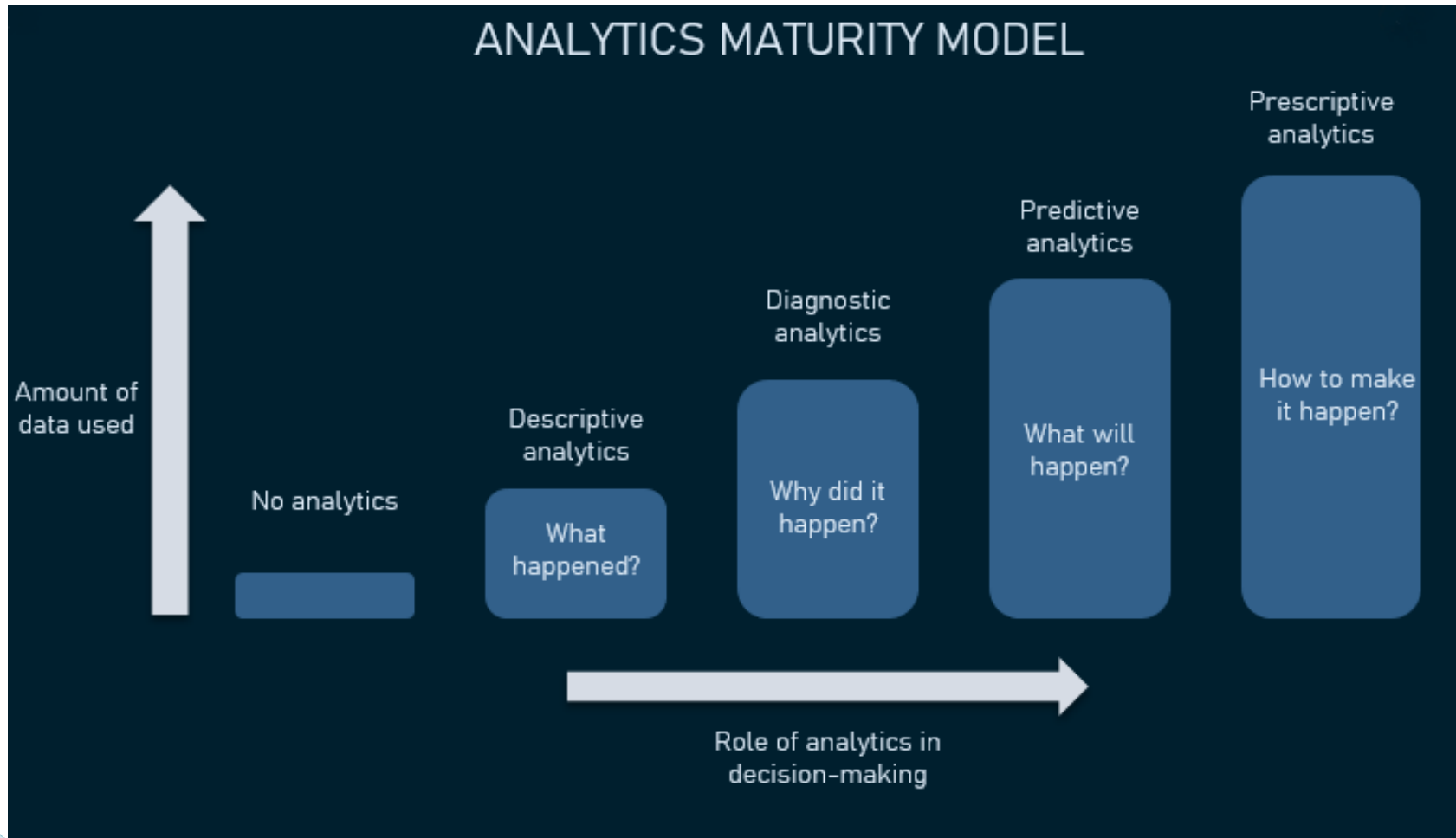
FY 21-22 Proposed Budget Presentation



# Budget Analytics



# Data & Analytics



FY 21-22 Proposed Budget Presentation

# Data & Analytics Services

*Mission: To ensure the County is providing easy access to relevant data & information in the best possible ways to help make decisions & solve challenges*

## □ Strategy

- ▣ Vision
- ▣ Alignment with County Strategic Plan
- ▣ Data work plan

## □ Literacy

- ▣ Training
- ▣ Ask questions of data
- ▣ Communicate meaning to others
- ▣ Data science

## □ Sharing

- ▣ Data User Groups
- ▣ Collaboration (governance)
- ▣ Regional communities

## □ Technology

- ▣ Tools & visualizations
- ▣ Data warehousing
- ▣ Securing, cataloging, publishing

## □ Analytics Development

**FTE: 2.0**

**Proposed FY 21-22 Resources: \$0 Expenses: \$294,246**



FY 21-22 Proposed Budget Presentation

# FY 21-22 Budget Details

## 21-22 RESOURCES

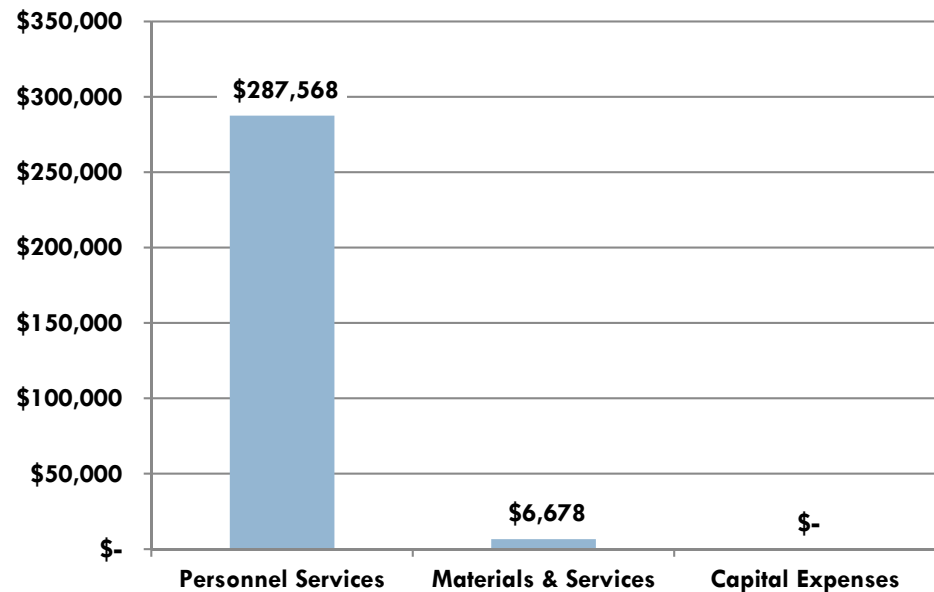
- FY21-22 & FY22-23: 100% General Fund
- FY23-24 Forward: Billed to all Funds as Central Service (Countywide Indirect)



# FY 21-22 Budget Details

## 21-22 EXPENDITURES

- Personnel Services
  - ▣ 2.0 FTE
- Materials & Services
  - ▣ Licensing
  - ▣ Training Expenses
  - ▣ Technology Support



# Future Challenges & Opportunities

- Connecting a distributed workforce
- Sharing data across our organization (and community)
- Building data literacy at all levels
- Investing in technology tools and data infrastructure





# Lane County Strategic Plan

Safe, Healthy County	Vibrant Communities	Robust Infrastructure	Our People & Partnerships
<ul style="list-style-type: none"> <li>• Establish work plan for top County initiatives (Equity, Homelessness, Economic Development, etc)</li> </ul>	<ul style="list-style-type: none"> <li>• Establish work plan for top County initiatives (Equity, Homelessness, Economic Development, etc)</li> </ul>	<ul style="list-style-type: none"> <li>• Partner with Technology Services and our community to evolve data relationships, infrastructure, tools and sharing capabilities</li> </ul>	<ul style="list-style-type: none"> <li>• Establish and partner the new Department and Roles</li> <li>• Form relationships with data &amp; analytics teams across Lane County</li> <li>• Align and provide data &amp; analytics capabilities Countywide</li> <li>• Engage with Lane County Equity teams to support this essential work</li> </ul>



# Questions?

14

□ *Up Next: Break / Human Resources*



FY 21-22 Proposed Budget Presentation